

**Schedule 1
Map of Agreement Area**

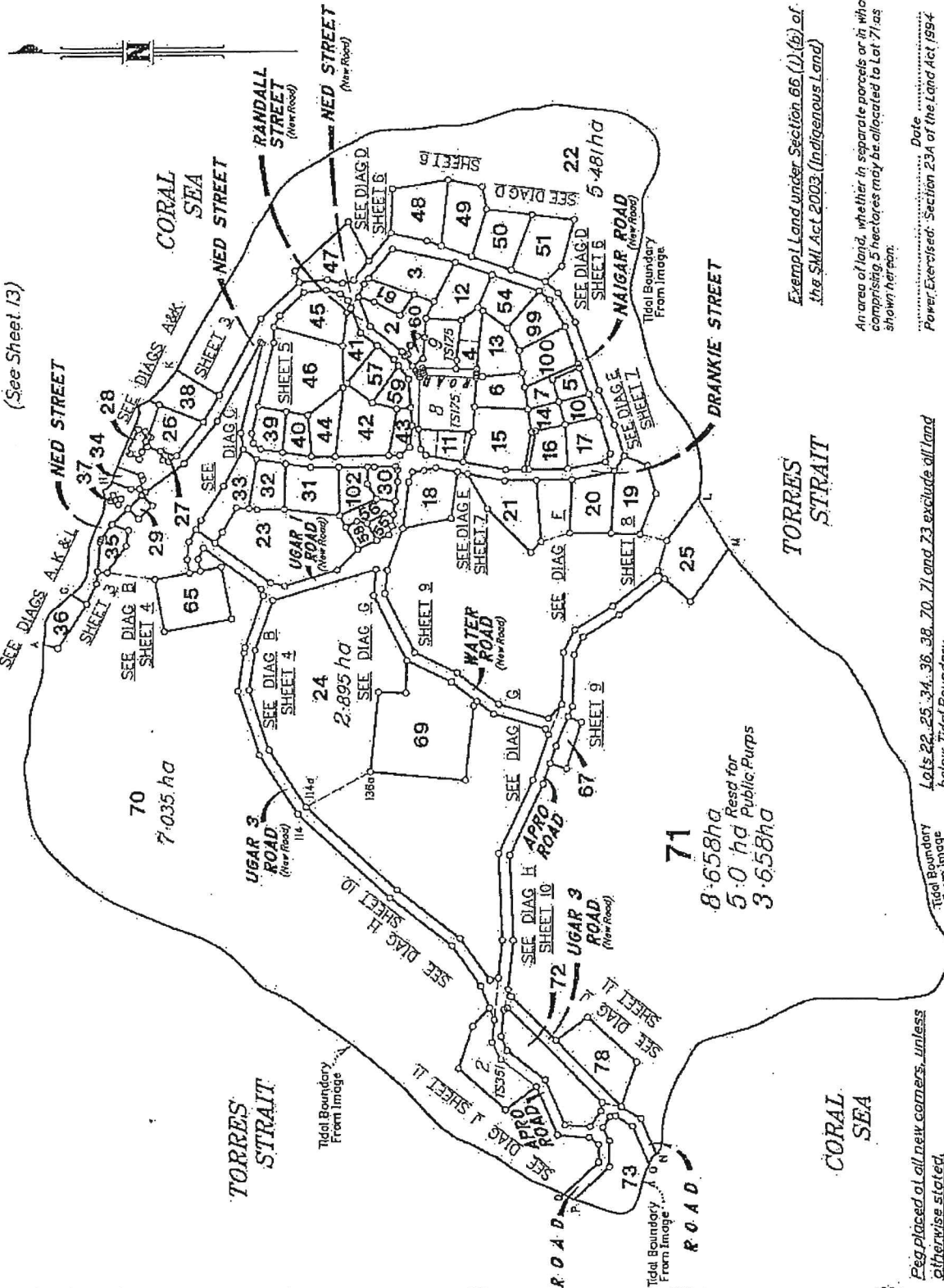
See attached survey plan of lot 57 on SP282706.

Land Title Act 1984; Land Act 1994
 Form 21 Version 3

SURVEY PLAN

Sheet 1 of 13

Total Area of New Road: 1.1114ha
 (See Sheet 13)



Exempt Land under Section 66 (1)(b) of the SML Act 2003 (Indigenous Land)

An area of land, whether in separate parcels or in whole, comprising 5 hectares may be allocated to Lot 71 as shown hereon.

Power Exercised: Section 23A of the Land Act 1994

Senior Land Officer
 A duly authorised delegate of the Minister under the current Land Act (Ministerial) Delegation.

Lots 22, 25, 34, 36, 38, 70, 71 and 73 exclude all land below Tidal Boundary.

The Tidal boundary is Mean High Water of Spring Tides.
 Tidal Boundary from Ugar Island 15cm Mosaic Image (September 2011) except for Tidal Boundary points shown in Tabulations A-G, G-H, H-K, L-M, N-O, P-Q. (See Sheet 12).

Peg placed at all new corners, unless otherwise stated.

For Meridian Tabulation See Sheet 12
 For Traverse Tabulation See Sheet 12
 For Reference Mark Tabulation See Sheet 12
 For Permanent Mark Tabulation See Sheet 12
 For MGA Coordinate Tabulation See Sheet 12

BRAZIER MOTT PTY LTD (ACN 066 411 041) hereby certify that the land comprised in this plan was surveyed by the corporation, by Neil Stewart BATES, Surveying Graduate, for whose work the corporation accepts responsibility, under the supervision of John Lee GYER, Certified Surveyor, and that the plan is accurate; that the road survey was performed in accordance with the Survey and Mapping Infrastructure Act 2003 and Surveyors Act 2003 and associated Regulations and Standards and that the road survey was completed on 24 April 2017.

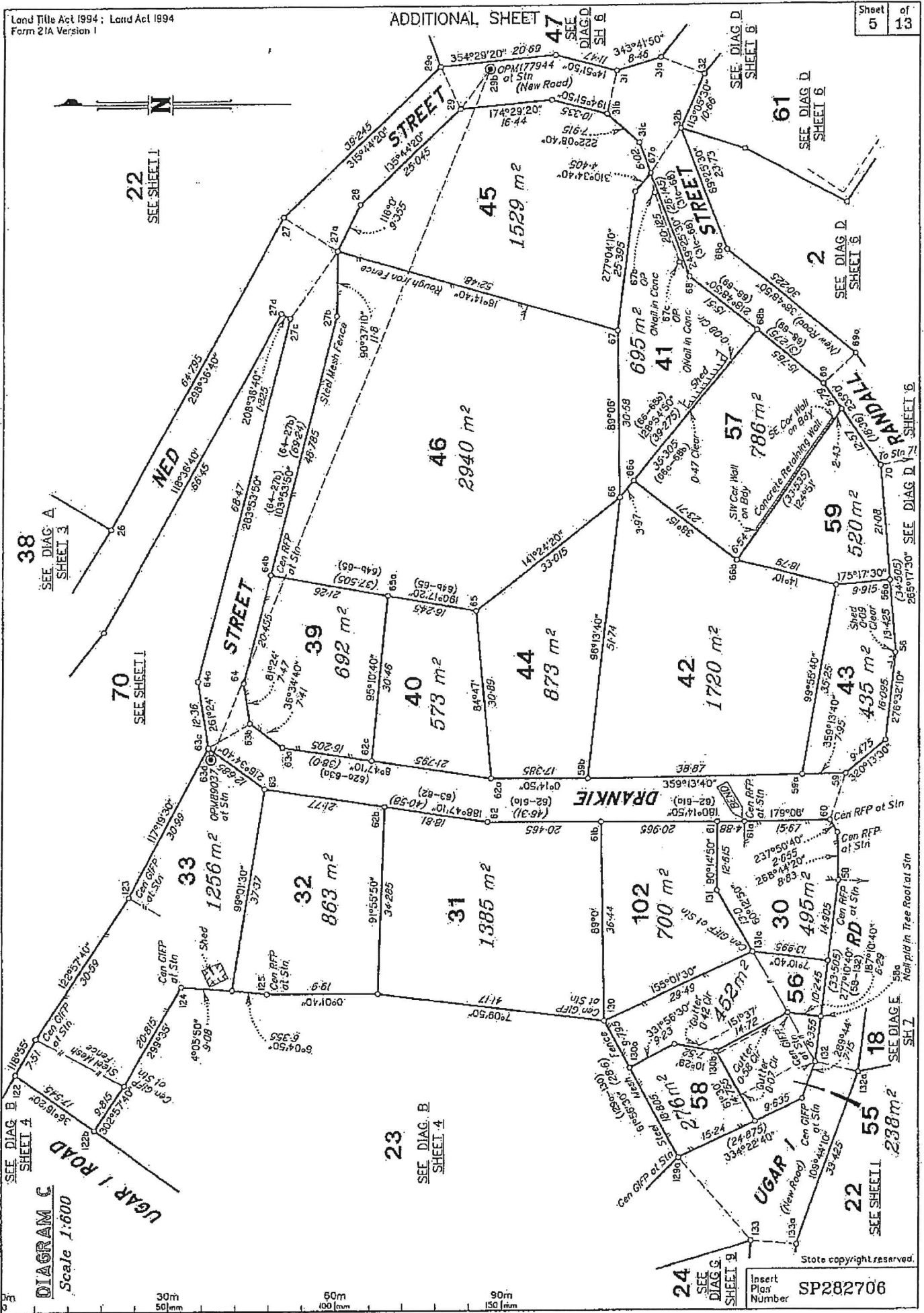


Director
 Date 24th April 2017

Plan of Lots 2-7, 10-51,
 54-61, 65, 67, 69-73,
 78, 99, 100 and 102
 Cancelling Lot 7 on Plan TS174

LOCAL GOVERNMENT: REGIONAL COUNCIL LOCALITY: UGAR ISLAND
 Meridian: MGA (Zone 54) Vide Meridian Table
 Survey Records: No.

Scale: 1:3000
 Format: STANDARD
 SP282706



Sheet 5 of 13

Land Title Act 1994; Land Act 1994
 Form 21A Version 1

DIAGRAM C
 Scale 1:600

30m
 60m
 90m
 150m

State copyright reserved.
 Insert Plan Number SP282706

Land Title Act 1994; Land Act 1994
Form 21A Version 1

ADDITIONAL SHEET

Sheet 12 of 13

REFERENCE MARKS

| STN | TO | ORIGIN | BEARING | DIST |
|------|---------------------|--------------|------------|-------------------|
| 1a | Screw in Rock | | 37°38'15" | 14.86 |
| 1a | Bolt in rock | | 290°45' | 78.36 |
| 2a | Nail in Rock | | 39°08'05" | 25.795 |
| 3 | Screw in Rock | | 52°18'30" | 6.695 |
| 8 | OScrew in Conc | 1/SP238224 | 110°34' | 14.875 (New Conn) |
| 12 | Screw in Conc | | 42°38' | 2.44 |
| 13 | SPkt | | 145°59' | 3.375 |
| 21 | SPkt | | 106°41' | 1.055 |
| 22 | Screw in Conc | | 257°36' | 2.59 |
| 22 | ONail in Kb gone | 2/SP238224 | 76°35'40" | 5.306 (N & C) |
| 25 | OScrew in Conc | 1/SP238224 | 289°42' | 17.87 |
| 26a | Nail in Stump | | 146°55' | 3.155 |
| 27 | SPkt | | 137°11' | 2.65 |
| 28 | Screw in Conc | | 72°22' | 6.405 |
| 30 | I.Pin | | 266°47' | 13.24 |
| 31 | Screw in Conc | | 257°28' | 7.615 |
| 32b | I.Pin | | 191°02' | 0.825 |
| 33 | Screw in Conc | | 255°20' | 4.87 |
| 34 | I.Pin | | 199°13' | 7.005 |
| 35a | Nail in Pavers | | 315°28' | 4.64 |
| 35b | Nail in Pavers | | 220°30'30" | 11.585 |
| 35c | Screw in Conc | | 212°56'30" | 8.785 |
| 36a | ONail in Pavers | 6/SP243823 | 141°32' | 6.495 (New Conn) |
| 37 | ONail in Pavers | 7/SP243823 | 268°08' | 4.005 (New Conn) |
| 38 | Nail in Tree Root | | 248°35'30" | 7.935 |
| 39 | I.Pin | | 45°38' | 1.375 |
| 40 | Screw in Pavers | | 260°13'30" | 8.615 |
| 41 | SPkt | | 348°54' | 0.69 |
| 42a | Screw in Conc | | 265°15'30" | 8.08 |
| 44 | SPkt | | 280°07' | 7.535 |
| 44a | OScrew in Conc | 8/SP243823 | 97°05' | 4.89 (New Conn) |
| 46 | I.Pin | | 79°47' | 6.345 |
| 46a | OIP | 9/SP243823 | 335°46'30" | 0.775 |
| 47 | Nail in Tree Root | | 35°56'30" | 10.165 |
| 50 | Screw in Conc | | 165°36' | 6.52 |
| 50d | ONail in Conc | 3/SP150253 | 45°25' | 5.667 |
| 50e | Screw in Conc | | 104°50' | 5.975 |
| 51 | Nail in Tree Root | | 67°21' | 1.065 |
| 52 | Nail in Rock | | 62°24'30" | 10.56 |
| 55 | ONail in PP | 2/DPI36894 | 65°33' | 1.038 |
| 56 | Cor of Shed | | 13°04' | 0.09 |
| 57 | I.Pin | | 295°03' | 0.975 |
| 57 | Screw in Pavers | | 87°06'30" | 10.65 |
| 58 | Nail in Paver | | 250°06' | 5.17 |
| 58a | Nail in Tree Root | | 111°01' | 3.76 |
| 63 | Nail in Conc | | 43°0' | 7.78 |
| 63a | SPkt | | 30°44' | 5.82 |
| 63b | Nail in Conc | | 10°57' | 1.61 |
| 65 | SPkt | | 359°16' | 7.78 |
| 66 | I.Pin | | 189°45' | 5.395 |
| 66b | Nail in Mango Tree | | 31°24' | 1.015 |
| 67b | ONail in Conc | 1/DP258353 | 135°21' | 2.505 |
| 67c | ONail in Conc | 2/DP258353 | 130°05'20" | 2.725 |
| 68a | ONail in Conc | 2/DP258353 | 42°40' | 5.48 (New Conn) |
| 71 | Screw in Pavers | | 343°18' | 4.945 |
| 73a | I.Pin | | 285°58' | 2.68 |
| 74b | I.Pin | | 290°28' | 1.925 |
| 74c | I.Pin | | 305°54' | 1.615 |
| 74d | Nail in Tree Root | | 112°25' | 5.17 |
| 76 | Nail in Rock | | 286°24' | 3.44 |
| 77 | OSPkt | 6/DPI45574 | 35°34'40" | 10.54 (New Conn) |
| 78 | O.SPkt | 78/SP282708 | 46°55' | 6.54 |
| 79 | I.Pin | | 106°07' | 10.745 |
| 80 | SPkt | | 29°28' | 11.635 |
| 81a | OIP | 81a/SP282707 | 184°40' | 10.025 |
| 82c | OSPkt | 82c/SP282707 | 186°21'30" | 10.36 |
| 83 | ONail in Conc Slab | 83/SP282707 | 11°28'30" | 11.905 |
| 84a | OIP | 5/DPI36894 | 179°23' | 11.78 (New Conn) |
| 85a | Screw in Rock | | 196°04'10" | 21.64 |
| 87 | I.Pin | | 157°01' | 15.895 |
| 88 | SPkt | | 80°15' | 3.535 |
| 89 | Screw in Rock | | 272°32' | 4.31 |
| 91a | Screw in Conc Valve | | 300°27' | 12.45 |
| 92a | Hold Down Bolt | | 116°07'30" | 8.28 |
| 93a | I.Pin | | 290°48' | 3.715 |
| 95 | SPkt | | 264°42' | 9.28 |
| 97 | SPkt | | 146°08' | 2.92 |
| 100 | I.Pin | | 265°42' | 1.72 |
| 101b | SPkt | | 68°09' | 3.84 |
| 103 | I.Pin | | 67°45' | 8.305 |
| 104 | Nail in Stump | | 176°43' | 3.295 |
| 106 | I.Pin | | 83°33' | 2.45 |
| 107 | Nail in Rock | | 312°08' | 3.935 |
| 108 | SPkt | | 22°47'30" | 8.715 |
| 108a | SPkt | | 71°57' | 10.765 |
| 112 | SPkt | | 46°48'30" | 15.075 |
| 113 | Screw in Rock | | 167°17' | 1.31 |
| 114 | Nail in Rock | | 220°06'30" | 11.825 |
| 116 | SPkt | | 263°39' | 10.3 |
| 119 | OIP | 4/SP127008 | 166°43' | 1.255 (New Conn) |
| 119 | OIP | 4/SP127008 | 260°34' | 1.655 |
| 120 | OIP | 5/SP127008 | 352°59' | 1.34 (New Conn) |
| 120 | OIP | 5/SP127008 | 263°25' | 1.384 |
| 121 | OIP | 6/SP127008 | 346°16' | 1.355 (New Conn) |
| 121 | OIP | 6/SP127008 | 80°29' | 1.455 (New Conn) |
| 121b | Nail in Conc | | 18°08' | 4.425 |
| 122 | I.Pin | | 93°35' | 6.46 |
| 126 | OIP | 3/SP127008 | 167°45' | 1.304 |
| 126 | OIP | 3/SP127008 | 79°37' | 1.398 |
| 127 | Screw in Rock | | 282°18'30" | 13.07 |
| 128 | I.Pin | | 335°29'30" | 8.065 |
| 129a | I.Pin | | 230°12' | 0.555 |
| 130a | Nail in Tree Root | | 74°26' | 0.87 |
| 130b | I.Pin | | 29°45' | 1.805 |
| 133 | Screw in Pavers | | 110°16' | 4.085 |
| 135 | SPkt | | 65°44' | 15.125 |

REFERENCE MARKS Cont.

| STN | TO | ORIGIN | BEARING | DIST |
|------|---------------|--------|------------|-------|
| 135a | Screw in Rock | | 217°01'30" | 13.17 |
| 136 | I.Pin | | 256°23'30" | 6.9 |
| 137a | SPkt | | 237°50" | 2.485 |

MERIDIAN TABLE

| LINE | PLAN BEARING | MGA ZONE 54 BEARING |
|------------------|--------------|-------------------------|
| PM89037-PM179944 | 111°37'10" | 111°37'09" vide SCDB |

PERMANENT MARKS

| PM | ORIGIN | BEARING | DIST | NO | TYPE |
|-----------|----------|------------|--------|--------|----------------------------|
| 10-OPM | SP127008 | 42°10' | 1.99 | 89036 | SPkt |
| 11-PM fd | | 55°26' | 6.21 | 176645 | Brass Plaque in Boulder |
| 12b-PM fd | | at Station | | 753322 | SS Bolt in Boulder |
| 14b-OPM | SP238224 | at Station | | 164053 | SS Bolt and Washer in Conc |
| 29b-OPM | SP258353 | at Station | | 177944 | SS Bolt and Washer in Conc |
| 59-PM | | 318°35'30" | 10.075 | 196402 | SS Bolt and Washer in Conc |
| 63d-OPM | SP258353 | at Station | | 89037 | SPkt |
| 99-PM | | at Station | | 186016 | Brass Plaque |

M.G.A. COORDINATES GDA-94

| STATION | EASTING | NORTHING | ZONE | P.U. | LINEAGE | METHOD | REMARKS |
|---------|-------------|---------------|------|-------|---------|--------|---------|
| 753322 | 779 599.902 | 8 948 275.452 | 54 | 0.032 | DA TUM | | OPM |
| 164053 | 779 614.982 | 8 948 265.534 | 54 | 0.032 | DA TUM | | OPM |
| 177944 | 779 745.059 | 8 948 131.109 | 54 | 0.032 | DA TUM | | OPM |
| 89037 | 779 618.937 | 8 948 181.093 | 54 | 0.032 | DA TUM | | OPM |

TABLE A

| TIDAL POINTS | |
|--------------|----------|
| BEARING | DISTANCE |
| A 100°0' | 11.725 |
| B 67°33' | 2.975 |
| C 88°34' | 2.09 |
| D 116°06' | 7.265 |
| E1 118°28' | 1.125 |
| E2 137°47' | 7.01 |
| F 138°42' | 14.4 |

TRAVERSES ETC

| LINE | BEARING | DISTANCE |
|-----------|------------|----------|
| H-12b | 130°22' | 3.69 |
| 3a-12l | 188°35'40" | 35.475 |
| 5a-10 | 76°10' | 8.54 |
| 8-8a | 29°38' | 5.06 |
| 11-12a | 109°46'30" | 9.145 |
| 12b-14a | 123°19'55" | 18.042 |
| 14-14b | 284°23' | 3.495 |
| 16-18 | 232°30'30" | 3.87 |
| 23-23a | 225°31' | 8.075 |
| 27-27a | 212°41'30" | 11.455 |
| 27a-27c | 304°48'40" | 14.82 |
| 29-29a | 65°06'50" | 8.48 |
| 29-29b | 126°36'30" | 8.96 |
| 31-31b | 282°42' | 8.005 |
| 31a-32 | 201°45' | 8.335 |
| 32b-67a | 303°31' | 9.875 |
| 33-33a | 264°39' | 11.645 |
| 37-37a | 300°40'45" | 8.15 |
| 44a-44c | 46°24'25" | 9.962 |
| 45-46a | 345°02'30" | 16.8 |
| 46-85 | 194°17' | 20.755 |
| 46a-48 | 8°55'30" | 35.74 |
| 48-51a | 343°41'30" | 22.26 |
| 50c-50d | 74°0' | 0.68 |
| 53-54 | 52°13' | 12.12 |
| 54a-54b | 10°13'55" | 8.605 |
| 58-58a | 182°57'30" | 8.02 |
| 59-60 | 288°31'30" | 8.985 |
| 63b-63c | 328°59'30" | 8.655 |
| 63c-63d | 257°15' | 2.175 |
| 63d-29b | 111°37'10" | 135.593 |
| 67a-67b | 258°22' | 3.66 |
| 67b-67c | 250°19'30" | 13.435 |
| 67c-68 | 235°13' | 3.175 |
| 69-69a | 136°54'25" | 8.08 |
| 69c-69d | 235°0' | 2.055 |
| 69d-69e | 235°0' | 1.8 |
| 69e-71 | 235°0' | 1.8 |
| 70-71 | 169°39'30" | 8.8 |
| 72-72a | 80°47'30" | 1.79 |
| 72a-72b | 80°47'30" | 1.79 |
| 72b-72c | 70°16'30" | 2.0 |
| 91-91b | 12°01' | 8.135 |
| 91b-91c | 293°28'25" | 24.595 |
| 95-95a | 190°56' | 8.23 |
| 97-111 | 324°42'40" | 8.0 |
| 97a-98a | 230°37'30" | 11.315 |
| 97a-110 | 275°20'20" | 31.895 |
| 98a-99a | 280°46'30" | 15.48 |
| 99a-110 | 312°54' | 10.65 |
| 101-101b | 301°36'30" | 8.0 |
| 101-101c | 12°25'35" | 14.445 |
| 104-104a | 143°34' | 12.375 |
| 114-114a | 140°22'30" | 8.06 |
| 114a-136a | 150°40'50" | 53.735 |
| 127-127a | 118°46' | 11.135 |
| 127-128a | 206°41'30" | 8.065 |
| 129a-133 | 229°25' | 20.02 |
| 132-132a | 193°27'20" | 8.048 |
| 133-133a | 184°23' | 8.385 |

TABLE B

| TIDAL POINTS | |
|--------------|----------|
| BEARING | DISTANCE |
| G 138°42' | 13.755 |
| 101°24' | 12.855 |
| 84°22' | 11.93 |
| 109°32' | 18.225 |
| 123°44' | 11.165 |
| 95°51' | 14.165 |
| 46°59' | 3.76 |
| 122°56' | 3.015 |
| 166°10' | 4.855 |
| 105°23' | 4.035 |

TABLE C

| TIDAL POINTS | |
|--------------|----------|
| BEARING | DISTANCE |
| H 105°23' | 8.955 |
| 112°11' | 3.275 |
| 112°11' | 13.3 |
| 112°11' | 1.7 |
| 114°44' | 16.465 |
| 114°44' | 1.045 |
| 113°09' | 11.14 |
| 58°22' | 4.965 |
| 137°33' | 2.895 |
| 162°40' | 7.705 |
| 132°17' | 17.56 |
| 128°12' | 11.235 |
| 117°20' | 1.37 |

TABLE D

| TIDAL POINTS | |
|--------------|----------|
| BEARING | DISTANCE |
| L 276°13' | 3.8 |
| 239°26' | 25.93 |
| 237°09' | 16.51 |

TABLE E

| TIDAL POINTS | |
|--------------|----------|
| BEARING | DISTANCE |
| N 323°43' | 3.125 |
| 295°09' | 6.57 |

TABLE F

| TIDAL POINTS | |
|--------------|----------|
| BEARING | DISTANCE |
| O 295°09' | 3.167 |
| 295°12' | 7.585 |
| 280°49' | 12.814 |
| 290°05' | 10.48 |
| 319°43' | 7.24 |
| 349°10' | 9.14 |
| 27°39' | 16.77 |
| 14°31' | 16.457 |

TABLE G

| TIDAL POINTS | |
|--------------|----------|
| BEARING | DISTANCE |
| P 31°46' | 8.265 |

State copyright reserved.

Insert Plan Number **SP282706**